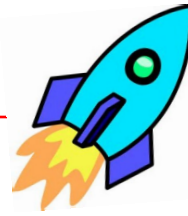


I ♥ CAMP



EWYC

2018 Day Camp
ewyouthcommission.org

Shawangunk



Dear Parents,

Welcome to another exciting summer of Camp Shawangunk! There are lots of changes this year due to some much needed construction on the school buildings. Not the least of which is that all indoor Camp activities will take place in the Elementary School! We will have no access to the Middle or High Schools! Please read through this flier carefully so you don't miss anything! We may be utilizing different spaces this summer, but we will still have lots of fun with different activities and off site trips.

If you have any questions you can always call us, we're here to help!

Camp Office (Winter) 647-7800 x129

Camp Office (Summer) 647-0200 x541
Located in the Elementary Cafeteria

Sam's Cell (M-F 8am-6pm) 430-3540

Camp 'Gunk Rocks,

Cynthia 'Sam" Bugna

Camp Director



Ages & Villages

(by completed grade)

Awosting Grades Pre-K, K -1

Minnewaska Grades 2 & 3

Mohonk Grades 4 & 5

Maratanza Grades 6 and up

Arrival & Dismissal at Camp

- * Camp's scheduled hours are 8:00am- 4:00pm
- * Campers may not be dropped off on school property more than 5 minutes before camp begins
- * Before Camp Care is available starting at 7:00am - \$25 per week
- * When dropping children off at camp please park in the assigned parking lot. DO NOT leave your vehicle unattended in the fire lane. **YOU MUST BRING YOUR CHILD INTO THE ELEMENTARY SCHOOL! Awosting to the Cafeteria, Minnewaska, Mohonk & Maratanza to the gym**
- * Pick-up begins no earlier that 3:45 pm. We are still very engaged right up until pick up time! Please respect Afternoon Assembly and allow the campers to finish what they are doing. **PICK UP AREAS WILL BE BROKEN DOWN BY VILLAGE. MINNEWASKA IN THE GYM, MOHONK IN THE MUSIC ASSEMBLY ROOM, MARATANZA IN THE CAFETERIA AND IN FRONT OF THE KINDERGARTEN WING FOR AWOSTING. YOU MUST PARK IN A PARKING SPOT AND COME IN AND GET THEM. MULTIPLE CHILD FAMILIES WILL BE TOGETHER WITH THE YOUNGEST CHILD.**
- * At 4:00, campers remaining at camp will be transferred to our After Care Program. This is not a provided service and your account may be charged late fees for repeated tardiness. **This pick up is in front or through the main doors of the Elementary School.**
- * After Camp Care is available until 5:00pm - \$25 per week
- * Parents should not leave campers unattended anywhere on the camp grounds, regardless of their age.

IMPORTANT!

On your child's registration form you should list all adults who have permission to pick up your child. Our staff will not release your child to anyone but those individuals. Camper will not be allowed to walk home without written permission on file in the camp office. When you arrive to pick up your child, until the staff know you, you will be asked for photo ID. Please be patient! If you wish to make different arrangements on any given day (like a play date or visit with Grandma), we must have a written note stating with whom your child will be going home. Please be sure to tell that person to bring their ID!

Social Contract & Discipline

As participants in Camp Shawangunk, campers have the opportunity to travel and to interact with a variety of people. This is a unique chance to exercise a new level of autonomy without parental authority. It also means increased personal responsibility representing your family, EWYC, and most importantly, yourself. Please read over the rules below very carefully with your children.

In keeping with the EWYC mission, appropriate behavior is expected of all participants in summer camp. Behavior that conflicts with essential EWYC values will be addressed in a nature appropriate to the disruptive behavior and is at the discretion of the EWYC staff and directors.

The use or possession of alcohol, tobacco, weapons, or any controlled substances by any program participant will result in expulsion from all EWYC programs for the remainder of the year.

Criminal behavior of any sort will not be tolerated. This includes the unauthorized use or theft of the property of any EWYC program participant or staff member. Also, damage or theft to program vehicles, equipment or any site visited will lead to expulsion from all EWYC programs for the remainder of the year.

Appropriate and respectful interactions with program participants and EWYC staff are at the core of the EWYC mission and essential to having a successful program experience.

To truly "disconnect to reconnect" at EWYC'S summer program, no electronics will be brought to camp. This includes cell phones and tablet computers.

It is the responsibility of the EWYC to ensure each person's right to achieve our goals within the camp setting. In order to do so, the EWYC requests the understanding and application of this proactive disciplinary policy.

Every person has the right to be safe and healthy within his or her environment, including the following:

- security and privacy of personal items
- freedom from verbal, physical and mental abuse (bullying)

Every person has the right to an opinion, and to be heard in a constructive and positive manner.

Every person has the right to be respected and treated fairly in a civilized manner.

Every person has the right to grow in spirit, mind and body and is equally valued and important to the EWYC. It is implied that these rights apply to all individuals, campers, staff and parents alike. If a person infringes on another's rights, the EWYC staff will take action to remedy the situation.

The EWYC staff will do their best to redirect any misbehavior and resolve any issues to achieve a positive outcome for all involved. Parents will be notified immediately if issues arise regarding camper behavior. If positive outcomes cannot be achieved, the EWYC reserves the right to suspend or terminate the camper from our program. Camp fees will not be prorated or refunded

Our Goal

The goal of our camp program is to help participants grow physically and mentally within the camp setting; while at the same time providing challenging activities for groups, large and small. All programs are run under the guidance of caring, well trained staff members. Camp gives children an experience that lasts a lifetime! This experience is grounded in the values of Respect, Responsibility, Honesty, Caring, Community, Diversity, Inclusiveness and Stewardship.

What to Bring



Camp is an active place. Campers will get dirty! Campers should dress appropriately to provide comfort and safety. Sneakers or comfortable, well fitting laced shoes are the best footwear and are required for most activities.

EVERYTHING SHOULD BE LABELED WITH YOUR CAMPER'S NAME!!

Items to Bring Every Day:

- Comfortable Backpack with shoulder straps
- Swimsuit & Towel
- Refillable Water Bottle
- Sunscreen
- Bug Repellent
- Light Rain Coat or Sweatshirt in case of inclement weather
- Smaller Awaiting campers should bring a full change of clothes
- Light, healthy afternoon snack



What Not To Bring:

- Expensive clothing
- Open Toed Shoes, sandals or flip flops
- Jewelry
- Electronics: Cell phones, MP3, Ipad, Tablet Computers, etc
- Pokemon/Yugioh Cards
- Anything you want to keep!



Breakfast & Lunch

The Ellenville Wawarsing Youth Commission, in conjunction with the NYS Department of Education and the USDA, operates the Summer Food Service Program for the 7 weeks that coincide with camp. Each camper, and anyone in the community under



the age of 19, can enjoy a professionally cooked, healthy meal, free of charge everyday, Monday through Friday. The daily menu is

available on our website and we strive to provide offerings that feed their whole bodies with goodness.

Our Chicken Fingers and wings are Coleman farms - all natural, free range chicken. Our Hot Dogs & Cold Cuts are Applegate Farms - Organic, Nitrate/Nitrite free, all natural with no hormones or antibiotics. All our poultry is from Murray's, locally owned, free range, hormone & antibiotic free. Available

everyday During Breakfast : Warm Bagels, Cold/Hot Cereal, Fruit & Yogurt, Muffins.

Available everyday during Lunch: Assorted Salads, Assorted Sandwiches, vegetarian/vegan options.

We offer organic almond milk and unlimited fresh fruit.



Swimming

Weather permitting (no thunder or lightning), we will provide a time for swimming every day at the School



Pool. All campers must meet or exceed the minimum height requirement for the School Pool. If

the child does not meet the minimum height requirement you are welcome to provide a *Coast Guard approved* flotation device for your child. (Arm swimmies are NOT APPROVED devices.) Prior to being allowed in the pool on their first day of attendance, all campers are tested by a Certified Water Safety Instructor (WSI) and an appropriate skill level is assigned based on the campers ability. Anyone allowed in the deep end must be able

to float on their backs, tread water for thirty seconds, dive six feet and retrieve a specified object, and swim the width of the pool using any stroke more advanced than the "dog paddle". Anyone may retake the test at any point during the summer by signing up with our WSI. We may provide swim lessons during scheduled camp times when registered by a parent or guardian.

Late Fees

The balance of all camp fees are due no later than June 1, 2018. Please understand that reserved space may NOT be held past June 1, 2018, without full payment. Any outstanding balances are subject to a 1.5% monthly finance charge.

Refund/Cancellation Policy: A full refund less \$50 deposit is available if cancelled prior to June 1, 2018.

No refunds after June 1, 2018.

ALL CANCELLATIONS MUST BE SUBMITTED IN WRITING. NO REFUNDS WILL BE GIVEN FOR DISMISSAL DUE TO BEHAVIOR.



'Gunk 2018

PO Box 671
Ellenville, NY 12428

Winter Phone: 845-647-7800 ext 129
Summer Phone: 845-647-0200 ext 541
Camp Director's Cell: 845-430-3540
Fax: 909-752-9423
ewyouthcommission.org

Camp 'Gunk Rocks!



Get Social With Us



Ellenville Wawarsing Youth Commission



EWYC



Iheartcamp



Camp Gunk

When you get the standard answer of - "nothing", when you ask, "What did you do at camp today?", log on to see all the great things that actually happened! Social media is a great way to stay connected, see photos and experience the awesomeness of camp even when the kids are short on stories!

Health & Safety

Health records, **REQUIRED BY LAW**, must be mailed or brought to the Youth Commission office no later than 2 weeks before the start of camp. Every child must have proof of a new/current immunization record completed by the physician's office. **Your child cannot start camp with out this vital documentation.** Please do not neglect to tell us if your child has special needs or allergies. Our staff can be more responsive and prepared if we are aware, in advance, of any issues your child may have. If your child requires medication during the camp day, carries an Epi-Pen or inhaler you must submit a Physician's Statement to the Camp Office that includes:

1. Diagnosis

2. Medication, Frequency and Dose
3. Physician Statement that it is permissible for the child to self-administer the medication in the presence of Camp Staff.

Parents must give all medication to the Camp Office, in the original container, clearly labeled with your child's name and the Doctor's note. **Campers are not permitted to keep over the counter medications on their person** - they all must be given to the camp staff.

Please **DO NOT** send your child to camp if he or she was ill the night or the morning before camp. If your child contracts a serious or contagious illness during the camp season, Please notify the Camp Director so we can notify other parents.

Camp Shawangunk is inspected regularly by the Ulster County Health Department. Copies of the inspector's

report's are available at both the Camp Office and the Ulster County Department of Health Services.



CAMP IS A CLOSED CAMPUS!!

All visitors, even those employed by the Town, Village or school district, **MUST** report to the Camp office upon arrival. Absolutely no one is allowed within Camp without acknowledgement from the Camp office. Thank you for respecting this important safety rule!

